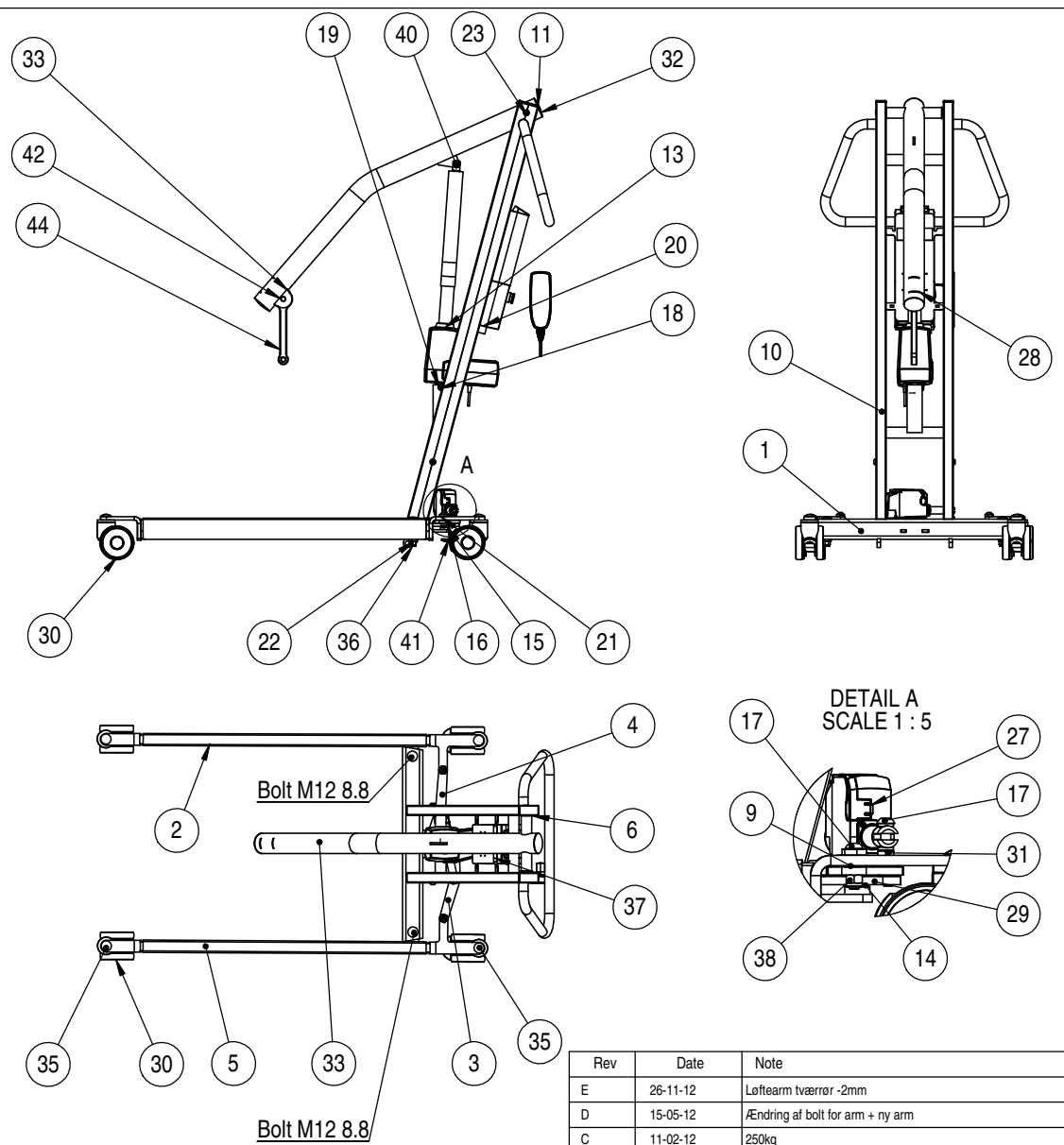


ITEM NO.	PART NUMBER	DESCRIPTION	QTY.
1	PR-2000	Tower mount	1
2	PR-1500	Leg righth p-lifter	1
3	PR-3100	Trækstang for ben venstre	1
4	PR-3000	Trækstang for ben Højre	1
5	PR-1000	Leg left p-lifter	1
6	PAF 2825115 P10	Kræbebøsning ø28/25-11mm	6
7	PR-3004	Aksel for ben	2
8	PR-3005	Distance ring for legs	2
9	PAF 15090 P10		2
10	PR-4000	Tower for person lifter	1
11	60X30 PROP		2
12	PR-5004	Aksel til løftearm	1
13	LA34-400 bund	LA34-400	1
14	PAF 14090 P10	Kræbebøsning ø14/12-9mm	3
15	AF-12-10,5	Afstandsring ø12x10,5	3
16	Hexagon socket button head screw ISO 7380 - M10 x 20		5
17	Hexagon socket button head screw ISO 7380 - M10 x 40		4
18	Pin-ø10-47	Pin-ø10-47	1
19	Circlip DIN 471 - 10 x 1		2
20	Jumbo	CBJ styring	1
21	PR-1006	Leg adjustm nut-12mm	2
22	PR-1010	Leg adjustm nut-3mm	2
23	DIN 912 M10 x 35 --- 35N		2
24	Hexagon socket head cap screw DIN 912 - M5 x 10		2
25	PR-5007	Aksel for arm for	1
26	PR-1008	Distance ring for bolt	2
27	LA23-bund-50mm	LA23-50 akt	1
28	50-17-3-9021M16	Plast skive ø50x3	2
29	PR-3007	Gearplade	1
30	5940UAP100P30-11	Tente wheel ø100	2
31	Hexagon Thin Nut ISO 4035 - M10 - N		2
32	ø60 prop	Plastik prop ø60	2
33	PR-6000	Lifting arm Mary	1
34	DIN T587 - M5 --NUC		2
35	Cup head square neck bolts ISO 8677 - M12 x 80		6
36	Prevailing torque type hexagon nut ISO 7040 - M12		6
37	Sticker	CE-mark and serie no	1
38	DIN EN ISO 7040 - M10 - N		2
39	Pin-ø10-42-star	Pin for atc top	1
40	STAR-LOCK		2
41	5947UAP100P30-11-kick-p	Wheel with brake	2
42	Hexagon head bolt ISO 4014 - M8 x 40		1
43	Prevailing torque type hexagon nut ISO 7040 - M8		1
44	PR-5016	Lift arm	1
45	PR-9101	Skærm for ben højre PL	1
46	PR-9102	Skærm for ben venstre	1



Rev	Date	Note
E	26-11-12	Løftearm tværrør -2mm
D	15-05-12	Ændring af bolt for arm + ny arm
C	11-02-12	250kg


 <b>rehab-care.dk</b> Cyprusvej 3 -7400-Herring Denmark WWW.rehab-care.dk	Scale:	1:15
	Paper:	A3
	Sheet 1 of 2	

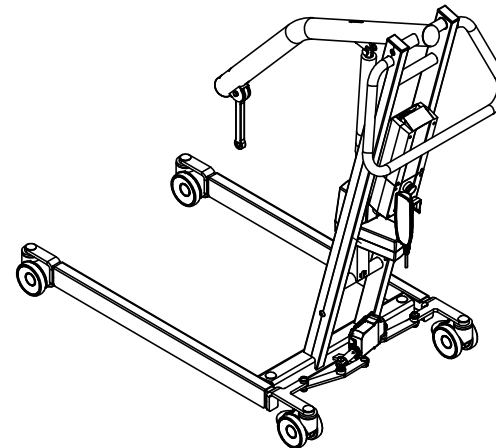
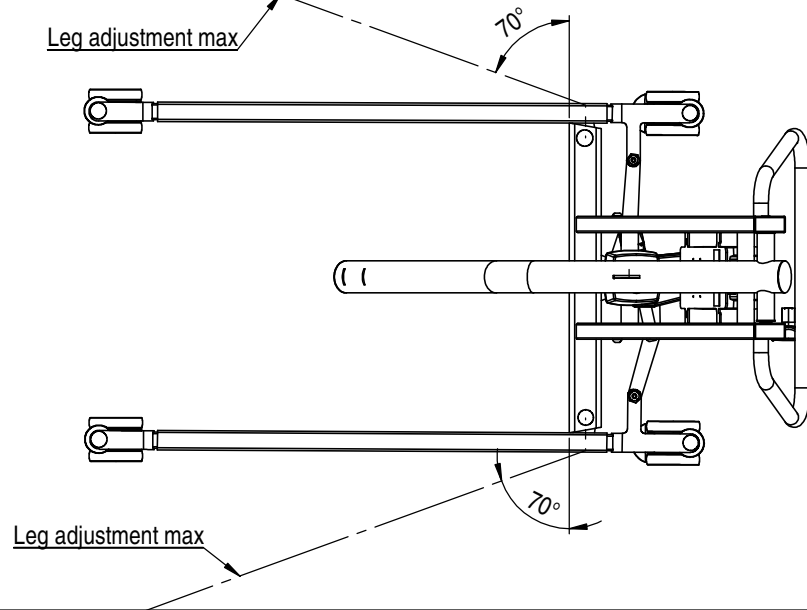
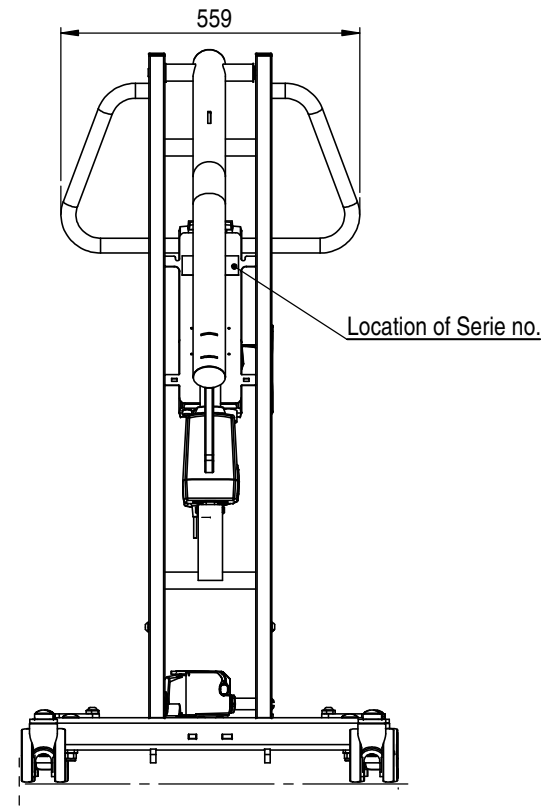
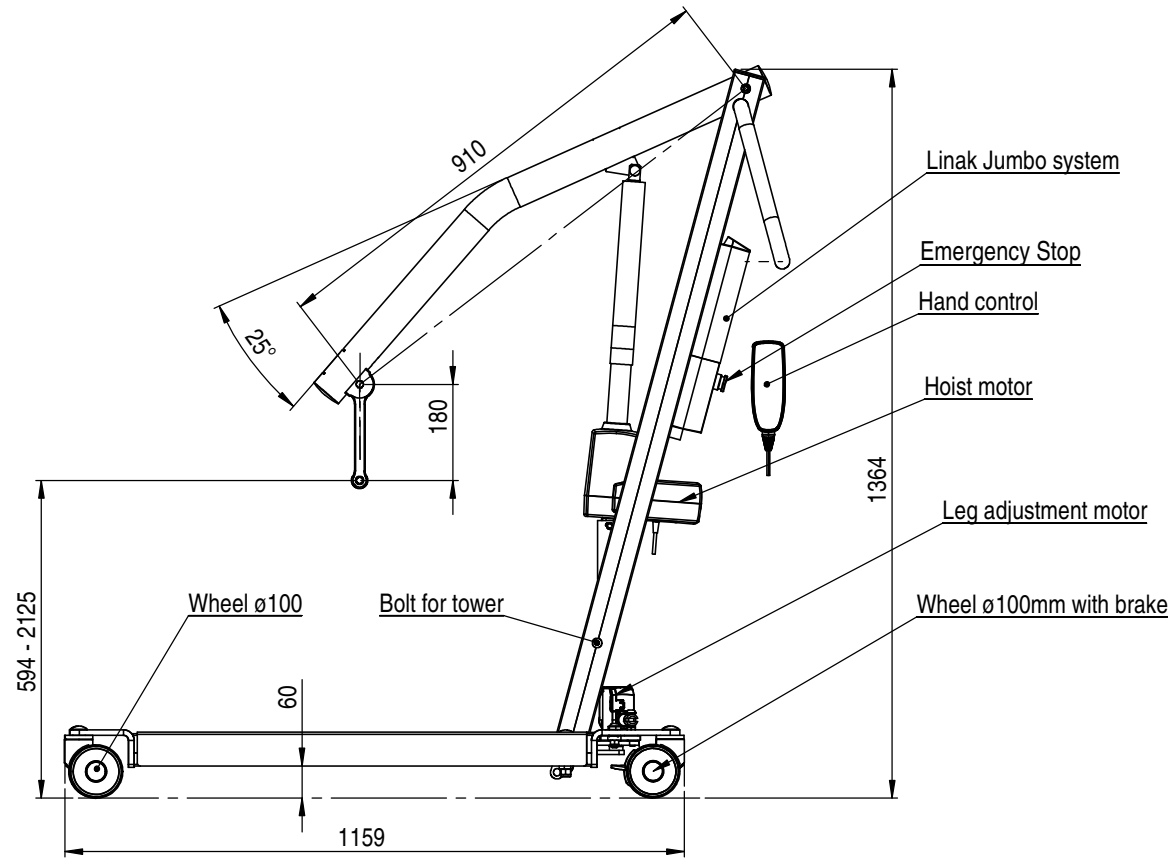
Description: Person lift -Mary-

Surface treatment: Color:

Drawn By: MG Drawn Date: 13-04-13

Weight: 39423.57 State: - ok Material:


 Drawing No.: PR-3500-200 Rev. E



Rev	Date	Note
E	26-11-12	Løftearm tværrør -2mm
D	15-05-12	Ændring af bolt for arm + ny arm
C	11-02-12	250kg

**rehab-care.dk**  
 Cypresvej 3-7400-Herring Denmark WWW.rehab-care.dk

Scale: 1:10  
 Paper: A3  
 Sheet 2 of 2

Description: Person lift -Mary-

Surface treatment: Color:

Drawn By: MG Drawn Date: 13-04-13

Weight: 39423.57 State: - ok Material:

Tolerances ISO 2768-mK

Drawing No.: PR-3500-200

Rev. E